



LANDSCAPE CONCEPT AND DA REPORT

Prepared for

POINT POLARIS

Project Reference: 2518015

9th October 2020



Australia
China
South East Asia

Follow us on



placedesigngroup.com

Report title	FOREST WAY SHOPPING CENTRE
Document number	2518015
Prepared for	POINT POLARIS
Authors	Baz Richards, Kassie Cottee, Rebecca Godwin
Revision number	K
Revision issue date	9th October 2020
Approved	BR
Reason for revision	DA Issue

Disclaimer: This report has been prepared in accordance with the scope of services described in the contract or agreement between Place Design Group Pty Ltd ACN 082 370063 and the Client. The report relies upon data, surveys, measurements and results taken at or under the particular times and conditions specified herein. Any findings, conclusions or recommendations only apply to the aforementioned circumstances and no greater reliance should be assumed or drawn by the Client. Furthermore, the report has been prepared solely for use by the Client and Place Design Group accepts no responsibility for its use by other parties.



CONTENTS

LANDSCAPE DESIGN STATEMENT	3
DESIGN PRINCIPLES	4
LANDSCAPE FORMS	5
LANDSCAPE PLAN GROUND - STAGE 1	6
LANDSCAPE PLAN GROUND - STAGE 2	7
DEEP SOIL PLAN - STAGE 1	8
DEEP SOIL PLAN - STAGE 2	9
PLANTING SCHEME -GROUND - STAGE 1	10
PLANTING SCHEME - GROUND STAGE 2	11
PLANTING SCHEDULE - TREES	12
PLANTING SCHEDULE - MIX 1	13
PLANTING SCHEDULE - MIX 2	14
PLANTING SCHEDULE - MIX 3	15
PLANTING SCHEDULE - MIX 4	16
PLANTING SCHEDULE - MIX 5	17
LANDSCAPE CONCEPTS	18
LANDSCAPE CONCEPTS	19
LANDSCAPE PLAN - LEVEL 1	20
DETAIL PLAN 5 - SKY GARDEN	21
PLANTING SCHEME - LEVEL 1	22
PLANTING SCHEDULE LEVEL 1 - TREES	23
PLANTING SCHEDULE LEVEL 1 - MIX 6	24
PLANTING SCHEDULE LEVEL 1 - MIX 7	25
PLANTING SCHEDULE LEVEL 1 - MIX 8	26
GREEN WALL APPROPRIATE SPECIES PALETTE	27
LANDSCAPE HARD MATERIALS	28
GRACE AVENUE ACOUSTIC/GREEN WALL	29
GREEN WALL DETAIL	31
GREEN WALL AND TRELLIS INFORMATION	32
GREEN ROOF DETAIL	33

Landscape Design Statement

Environmental Context and Understanding

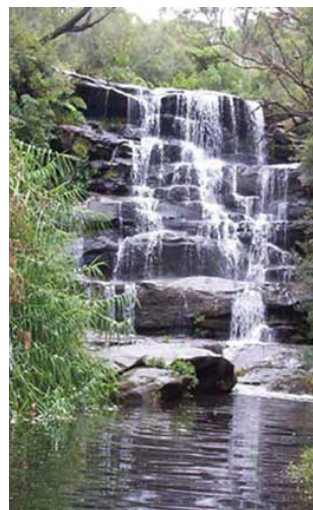
The site is on a higher rainfall, shale sandstone transitional area of the Hornsby Plateau.

To the west of the site is Garigal National Park: a 'Wildlife haven'. The park comprises coastal, Eucalyptus forest and Heathland environments. Common flora includes grey mangroves, old man banksias, grass trees and scribbly gums. Fauna includes the Eastern water dragon, and several threatened species such as the red-crowned toadlet, tiger quoll, white-bellied sea eagle, powerful owl, swift parrot, Eastern Bentwing bat and grey-headed flying fox.

By drawing on the local environmental context in our design strategy, we aim to bring a contextually relevant and educational landscape design to the Forestway shopping centre experience.



DAPPLED LIGHT



SKY

Plazas and Terraces

The landscape design approach aims to enhance the social and aesthetic experience of the centre by providing a variety of destination spaces that compliment the architectural form. The strong geometry of the building provides inspiration for a unique, geometric paving design/banding and planted garden beds. Several outdoor terraces such as the northern plaza, the corner of Russell Avenue/ Grace Avenue and at Sorlie Place will respond to the architectural form through this hard and soft landscaping approach and provide outdoor social gathering places. Level changes generally step down to the street and this creates an opportunity for attractive high-quality materials combined with trailing planting to form a beautiful 'green edge'.

Fine Grain Spaces

The indicative streetscape layout shows streetscape upgrades to Forest Way, Russell Avenue, Grace Avenue and Sorlie Place. There is sufficient width to accommodate a 'shareway' along Forest Way that would provide active transport connections to the wider precinct. Seating bays along Forest Way and seating walls on Russell Avenue provide opportunity for 'pause and rest' at the street level, which in turn creates more lingering and gathering; increasing passive surveillance and street safety for all. Paving thresholds provide a level of permeability and work to activate the public domain from the outside-in and promote inclusivity, sociability and a sense of shared ownership and experience.

Planting Design

The planting scheme draws on the environmental context of the site and its surroundings. The area is at the heart of various vegetation/ecological communities including Coastal Sandstone Gully Forest, Sydney North Exposed Sandstone Woodland, Sydney Ironside Bloodwood Silvertop Ash Forest and Coastal Shale-Sandstone Forest. These communities comprise native flora and fauna which have informed and inspired design decisions; the planting palette includes species which are prevalent in the surrounding communities.

We aim to bring a contextually relevant and educational soft landscape context

to the Forestway centre experience that is hardy and robust and appropriate to the various microclimates. Indicative street tree planting is reflective of Northern Beaches Council preferred street tree selections and will provide shade to the pedestrian experience as well as additional acoustic buffering to adjacent residents along Grace Avenue.

Green Walls as Acoustic Barriers

Feature green walls along Grace Avenue provide acoustic buffering for residents living opposite the loading dock area on Grace Avenue. The green technology proposed will reduce noise and combined with street tree planting will add to the green envelope of the shopping centre.

Level 1 Sky Garden

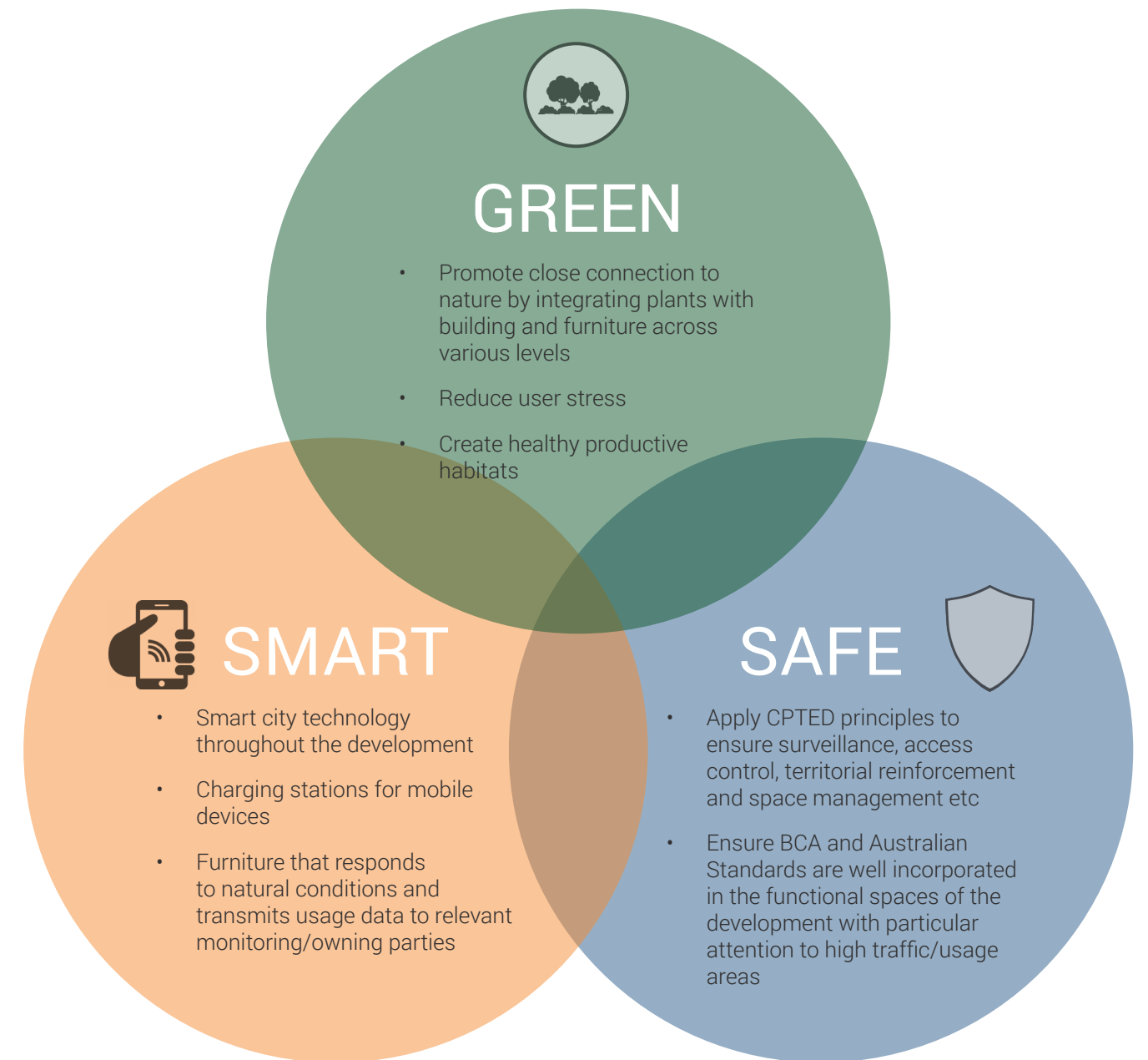
Strong, angular landscape forms on Level One will compliment the design of the built form. A custom play feature including nature play elements will provide an outdoor focus. Outside dining areas and equipment/activities that cater for older children and families such as table tennis will provide for a wider demographic. A large open space with artificial turf will provide the perfect gathering space served by an outdoor kiosk for coffee and snacks. Quiet, contemplative areas with catenary lighting will offer more intimate settings and spill out spaces. Planted pergola walkways with climbing vines and trees in raised garden beds will provide the green feel of the garden.

SHADE

WATER

LUSH

WIND

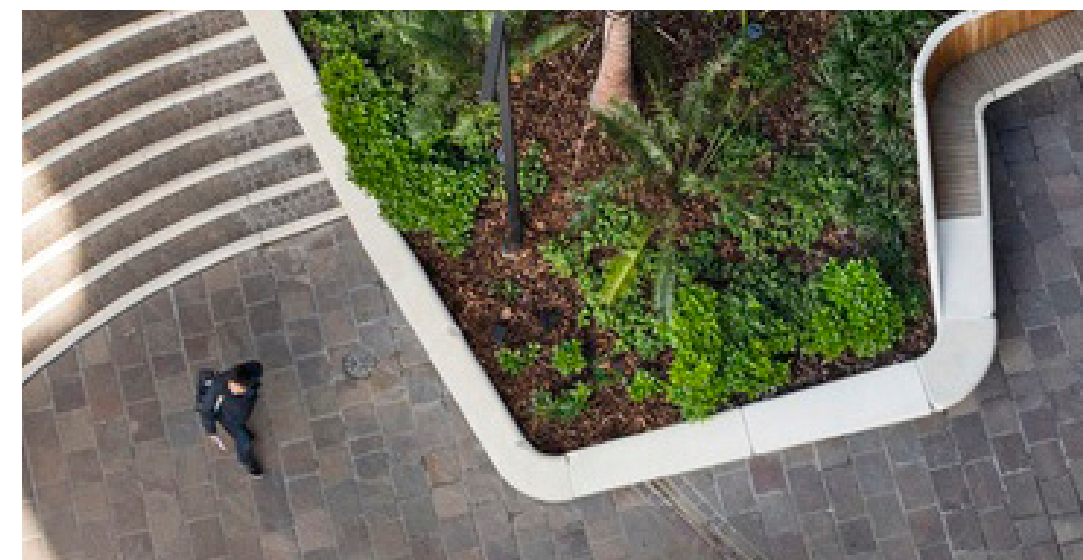




BOLD LINE AND CURVE

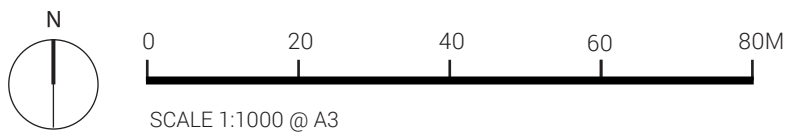
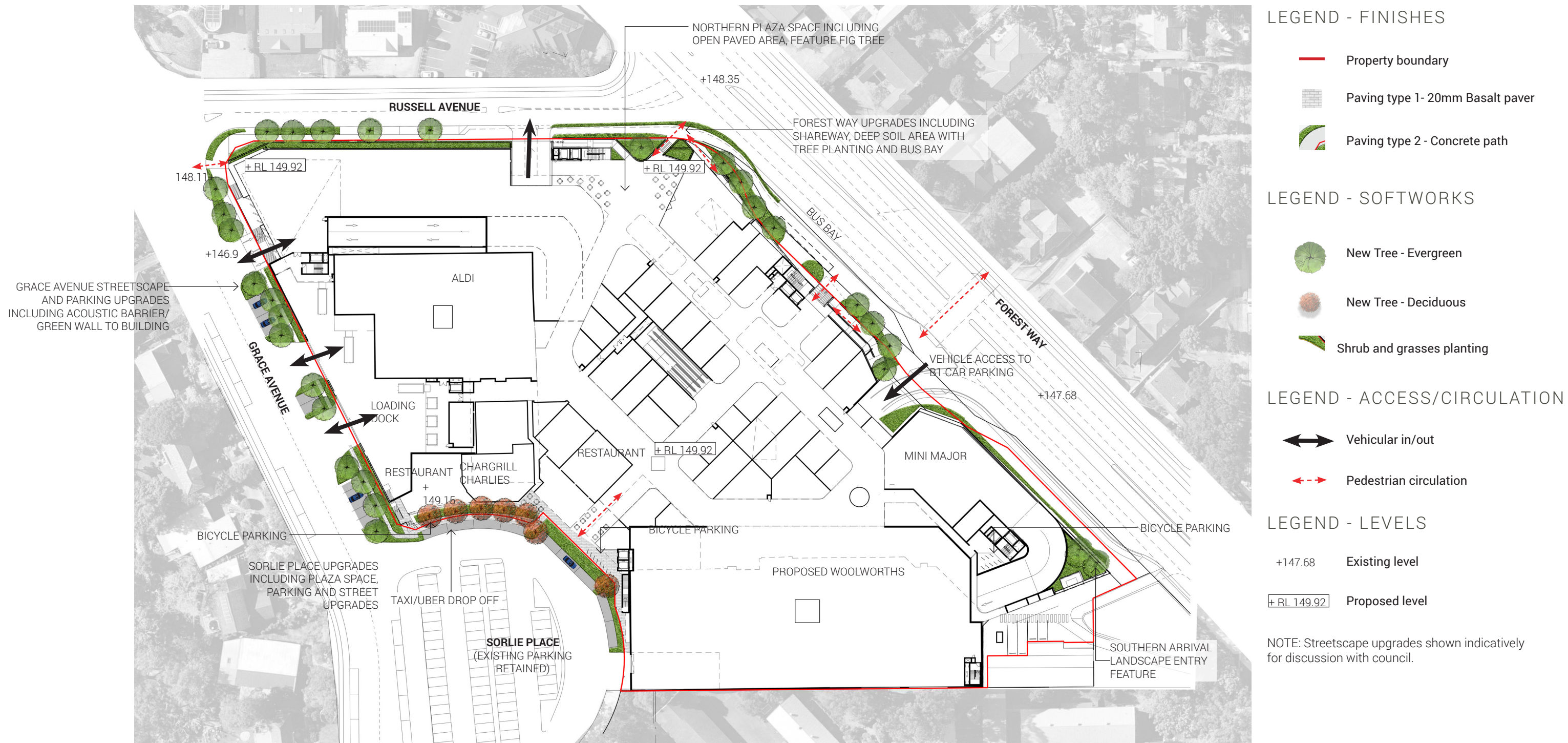


ROUNDED CORNERS

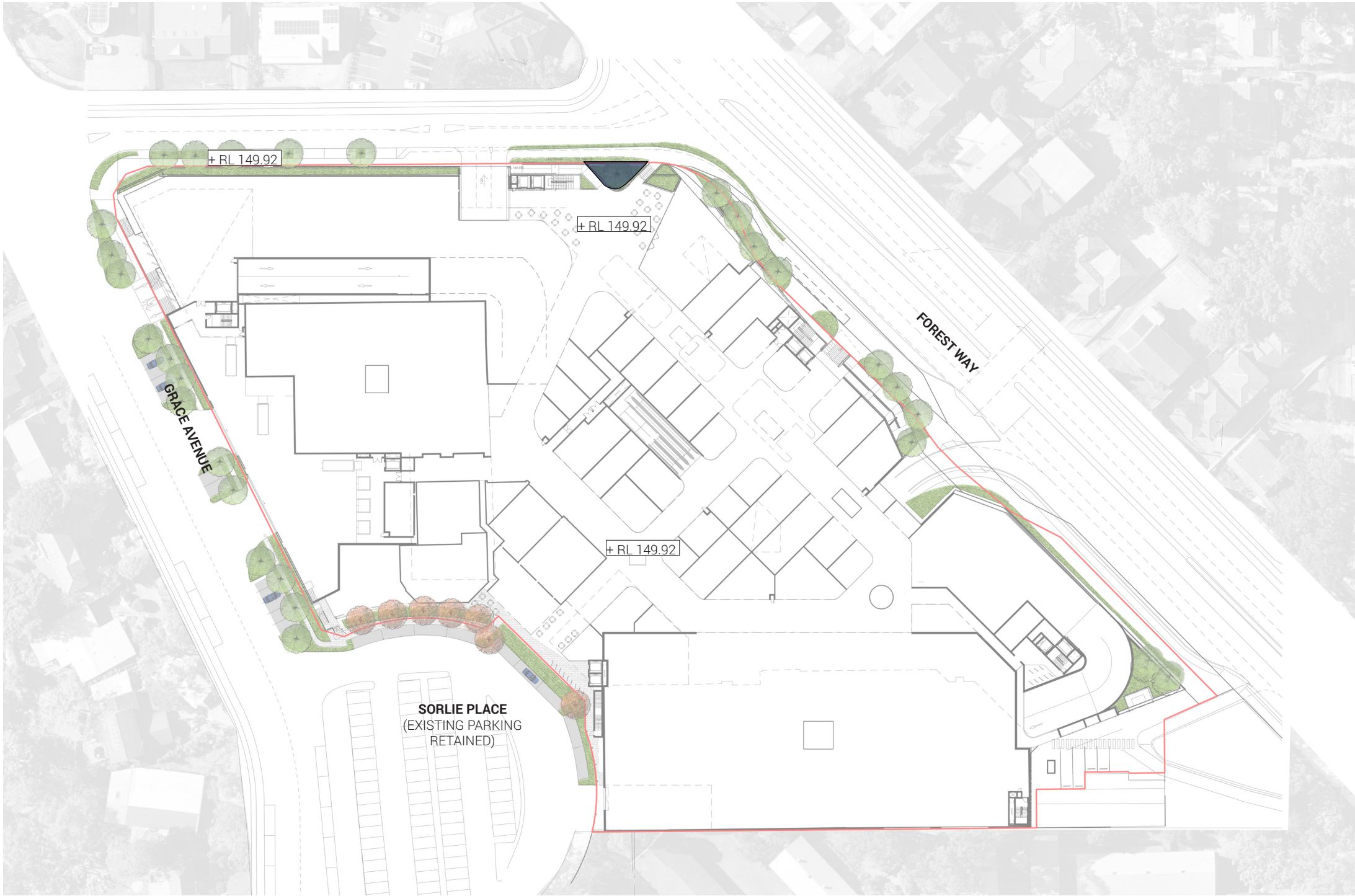


STEP LEVEL CHANGES

LANDSCAPE PLAN GROUND - STAGE 1



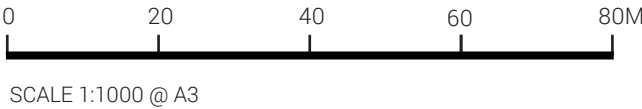
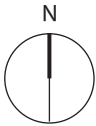
DEEP SOIL PLAN GROUND - STAGE 1



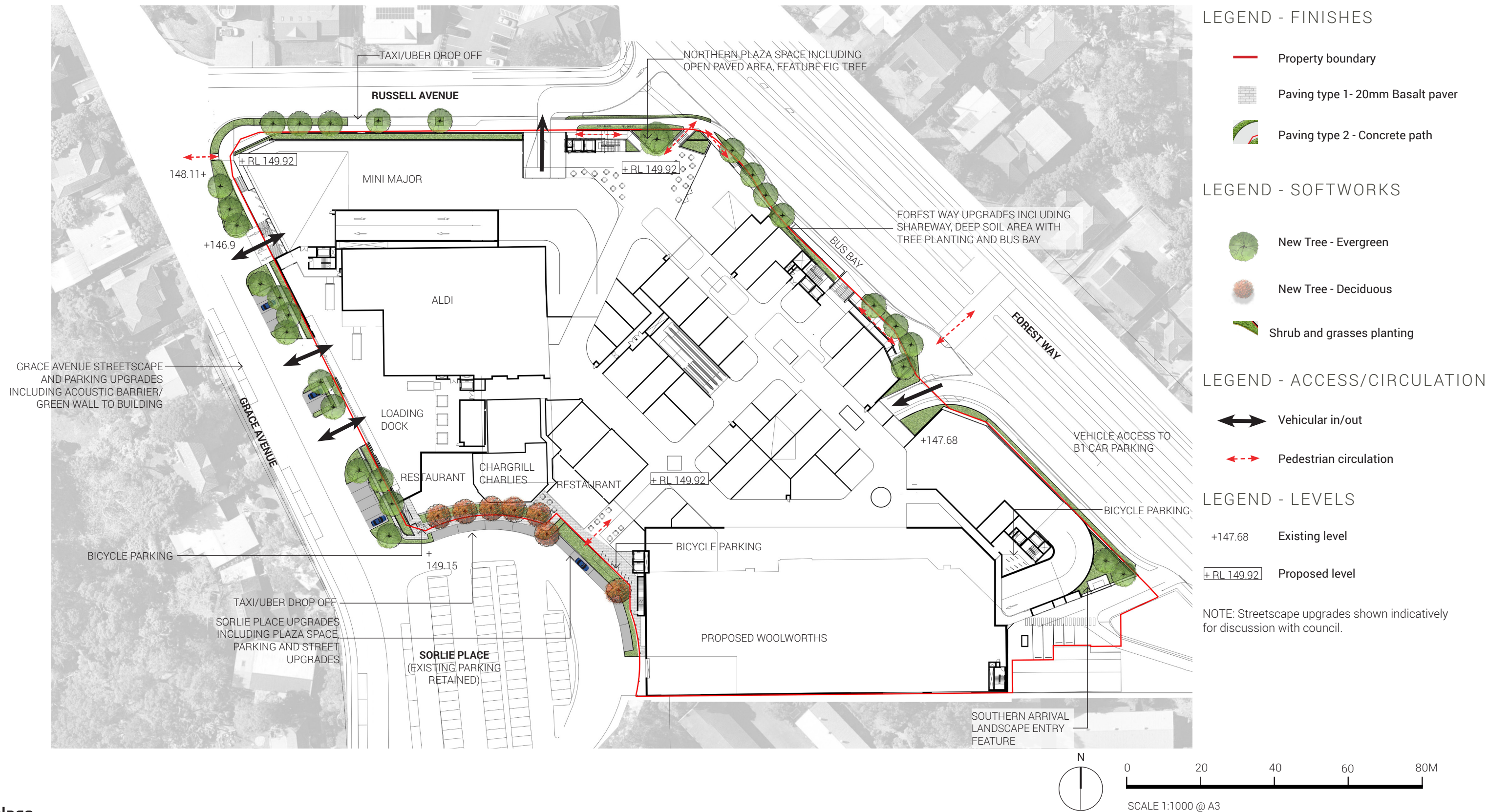
LEGEND - SOIL PLAN

- Property boundary
- Deep soil area within property boundary (at edge of building)
Total area = 40 m²

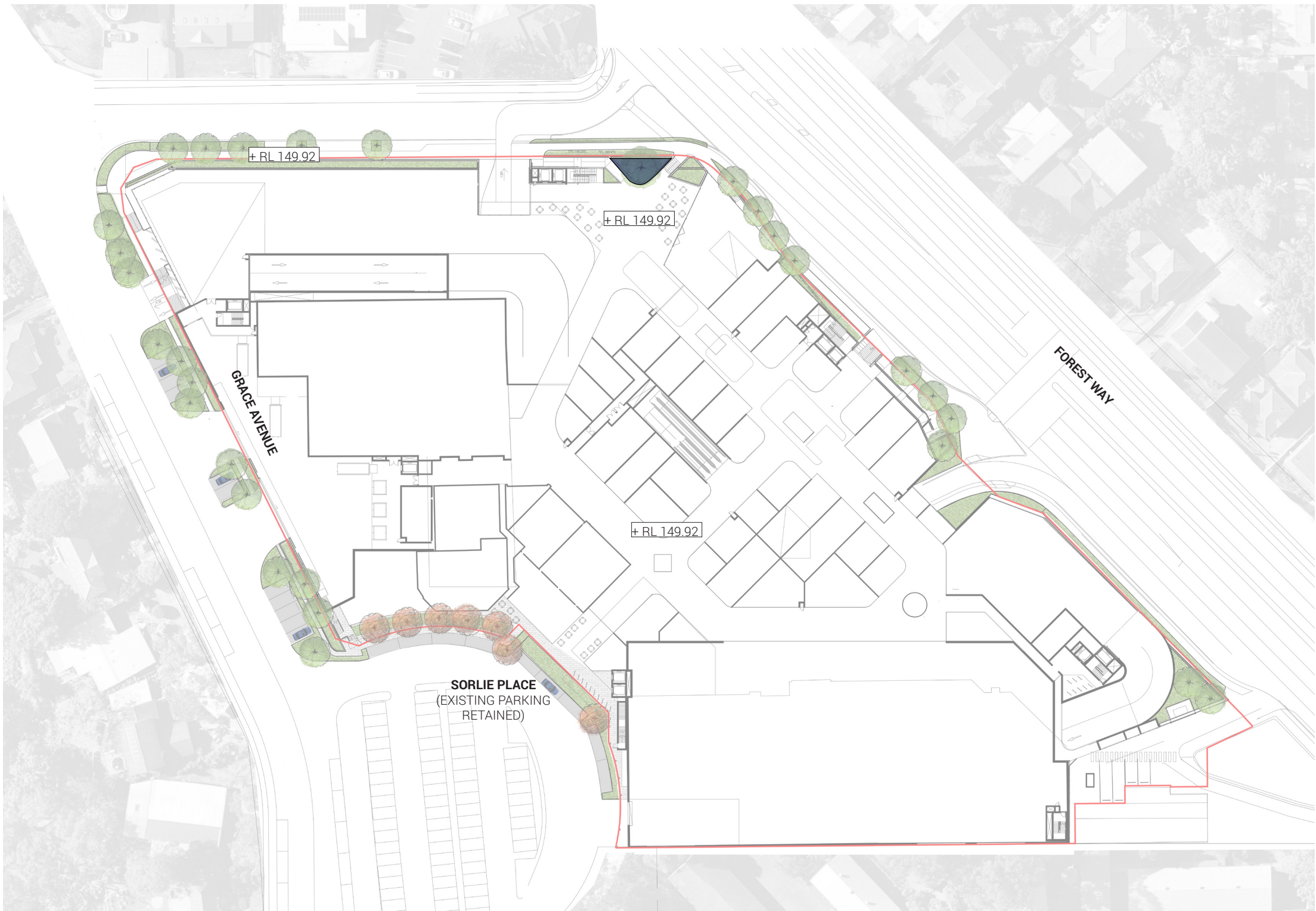
NOTE: Areas shown include areas only within property boundary



LANDSCAPE PLAN GROUND - STAGE 2



DEEP SOIL PLAN GROUND - STAGE 2

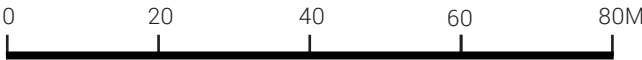
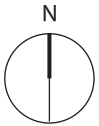


LEGEND - SOIL PLAN

- Property boundary
- Deep soil area within property boundary (at edge of building)

Total area = 40 m²

NOTE: Areas shown include areas only within property boundary



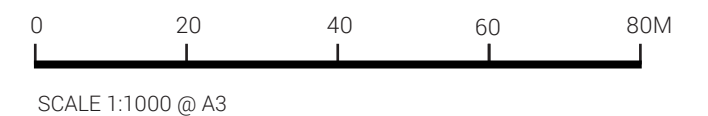
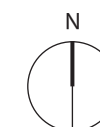
SCALE 1:1000 @ A3

PLANTING SCHEME GROUND - STAGE 1



LEGEND - PLANTING

- PLANTING MIX 1 - Nature strip planting area
- PLANTING MIX 2 - Trailing edge planting area
- PLANTING MIX 3 - Feature edge planting area
- PLANTING MIX 4 - Parking bay edge planting area
- PLANTING MIX 5 - Shade tolerant southern arrival planting area
- New Tree - Evergreen
- New Tree - Deciduous

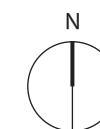


PLANTING SCHEME GROUND - STAGE 2



LEGEND - PLANTING

- PLANTING MIX 1 - Nature strip planting area
- PLANTING MIX 2 - Trailing edge planting area
- PLANTING MIX 3 - Feature edge planting area
- PLANTING MIX 4 - Parking bay edge planting area
- PLANTING MIX 5 - Shade tolerant southern arrival planting area
- New Tree - Evergreen
- New Tree - Deciduous



0 20 40 60 80M
SCALE 1:1000 @ A3

PLANTING SCHEDULE - TREES

STAGE 1 & 2

BOTANICAL NAME	COMMON NAME	INDICATIVE HEIGHT	INDICATIVE SPREAD	POT SIZE	DENSITY/m²	QUANTITY
Banksia serrata	Old Man Banksia	8-15m	8m	25L	As shown	2
Corymbia maculata	Spotted Gum	20-30m	10-20m	45L	As shown	8
Lophostemon confertus	Queensland Brush Box	3-15m	2-10m	45L	As shown	13
Ficus rubiginosa	Port Jackson Fig	10-20m	20m	45L	As shown	1
Trisaniopsis laurina 'Luscious'	Luscious	5-15m	3-10m	45L	As shown	5
Lagerstroemia indica x fauriei 'Natchez'	Natchez Crepe myrtle	6-8	6m	25L	As shown	7



NOTE:
PLANTING QUANTITIES FOR STAGES 2 ARE TOTAL NUMBER OF OVERALL PLANTS (INCLUDING STAGE 1 PLANTS)

PLANTING SCHEDULE - MIX 1

STAGE 1

NATURE STRIP PLANTING - AREA = 201m2

BOTANICAL NAME	COMMON NAME	INDICATIVE HEIGHT	INDICATIVE SPREAD	POT SIZE	DENSITY/m²	TOTAL QUANTITY
Doryanthes excelsa	Gymea Lily	1.5-4m	2m	200mm	1	50
Hibbertia scandens	Guinea flower	1m	3m	200mm	2	101
Lomandra longifolia 'Tanika'	Tanika	0.5-0.7m	0.5-0.6m	200mm	6	302
Westringia fruticosa 'Grey Box'	Grey Box	2m	1.5m	200mm	4	201



STAGE 2

NATURE STRIP PLANTING - AREA = 164m2

BOTANICAL NAME	COMMON NAME	INDICATIVE HEIGHT	INDICATIVE SPREAD	POT SIZE	DENSITY/m²	TOTAL QUANTITY
Doryanthes excelsa	Gymea Lily	1.5-4m	2m	200mm	1	41
Hibbertia scandens	Guinea flower	1m	3m	200mm	2	82
Lomandra longifolia 'Tanika'	Tanika	0.5-0.7m	0.5-0.6m	200mm	6	246
Westringia fruticosa 'Grey Box'	Grey Box	2m	1.5m	200mm	4	164



NOTE:
PLANTING QUANTITIES FOR STAGES 2 ARE TOTAL NUMBER OF OVERALL PLANTS (INCLUDING STAGE 1 PLANTS)

PLANTING SCHEDULE - MIX 2

STAGE 1

TRAILING EDGE - AREA = 295m2

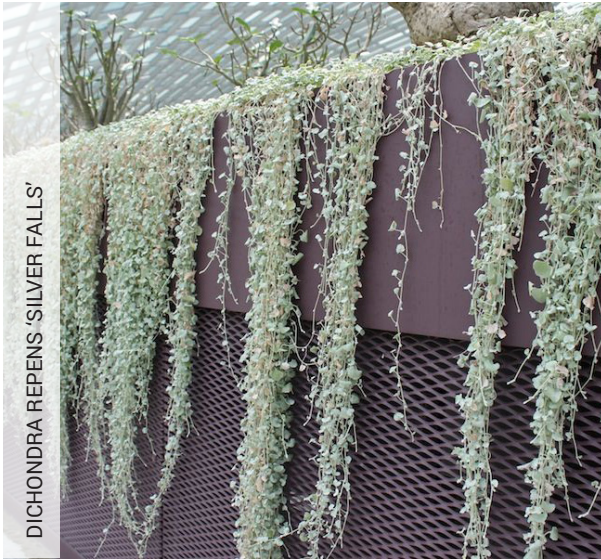
BOTANICAL NAME	COMMON NAME	INDICATIVE HEIGHT	INDICATIVE SPREAD	POT SIZE	DENSITY/m²	QUANTITY
Agave attenuata 'Ray of Light'	Fox Tail Agave	1.5m	1.8 m	200mm	1	42
Casuarina glauca 'Kattany Karpet'	Kattany Karpet	0.1-0.5m	2m	200mm	4	168
Dianella caerulea 'Casa Blue'	Blue Flax Lily	0.5-1m	0.5-2m	200mm	8	337
Dichondra repens 'Silver Falls'	Silver falls	0.1m	0.3m	200mm	9	379
Rosmarinus officinalis 'Prostratus'	Creeping Rosemary	0.5m	3m	140mm	4	168
Senecio mandraliscae	Blue Chalksticks	0.3m	1m	200mm	6	253
Zamia furfuracea	Cardboard plant	1.5m	2.5m	200mm	5	211



STAGE 2

TRAILING EDGE - AREA = 290m2

BOTANICAL NAME	COMMON NAME	INDICATIVE HEIGHT	INDICATIVE SPREAD	POT SIZE	DENSITY/m²	QUANTITY
Agave attenuata 'Ray of Light'	Fox Tail Agave	1.5m	1.8 m	200mm	1	42
Casuarina glauca 'Kattany Karpet'	Kattany Karpet	0.1-0.5m	2m	200mm	4	166
Dianella caerulea 'Casa Blue'	Blue Flax Lily	0.5-1m	0.5-2m	200mm	8	332
Dichondra repens 'Silver Falls'	Silver falls	0.1m	0.3m	200mm	9	374
Rosmarinus officinalis 'Prostratus'	Creeping Rosemary	0.5m	3m	140mm	4	166
Senecio mandraliscae	Blue Chalksticks	0.3m	1m	200mm	6	249
Zamia furfuracea	Cardboard plant	1.5m	2.5m	200mm	5	208



NOTE:
PLANTING QUANTITIES FOR STAGES 2 ARE TOTAL NUMBER OF OVERALL PLANTS (INCLUDING STAGE 1 PLANTS)



PLANTING SCHEDULE - MIX 3

STAGE 1

FEATURE EDGE - AREA = 56m2

BOTANICAL NAME	COMMON NAME	INDICATIVE HEIGHT	INDICATIVE SPREAD	POT SIZE	DENSITY/m²	QUANTITY
Liriope muscari 'Variegata'	Lily Turf	0.4m	0.3m	200mm	8	75
Poa labillardieri 'Eskdale'	Poa Eskdale	0.6m	0.5m	200mm	6	56
Plectranthus argentatus 'Silver shield'	Silver Spurflower	1m	1.5m	200mm	3	28
Strelitzia juncea	Bird of Paradise	2m	1m	200mm	4	37
Teucrium fruticans	Shrubby Germander	0.75-1.2m	1.8m	200mm	3	28
Viola hederacea	Native violet	0.15m	2m	200mm	8	75



STAGE 2

FEATURE EDGE - AREA = 56m2

BOTANICAL NAME	COMMON NAME	INDICATIVE HEIGHT	INDICATIVE SPREAD	POT SIZE	DENSITY/m²	QUANTITY
Liriope muscari 'Variegata'	Lily Turf	0.4m	0.3m	200mm	8	75
Poa labillardieri 'Eskdale'	Poa Eskdale	0.6m	0.5m	200mm	6	56
Plectranthus argentatus 'Silver shield'	Silver Spurflower	1m	1.5m	200mm	3	28
Strelitzia juncea	Bird of Paradise	2m	1m	200mm	4	37
Teucrium fruticans	Shrubby Germander	0.75-1.2m	1.8m	200mm	3	28
Viola hederacea	Native violet	0.15m	2m	200mm	8	75



NOTE:
PLANTING QUANTITIES FOR STAGES 2 ARE TOTAL NUMBER OF OVERALL PLANTS (INCLUDING STAGE 1 PLANTS)



PLANTING SCHEDULE - MIX 4

STAGE 1

 PARKING BAY EDGE - AREA = 549m2

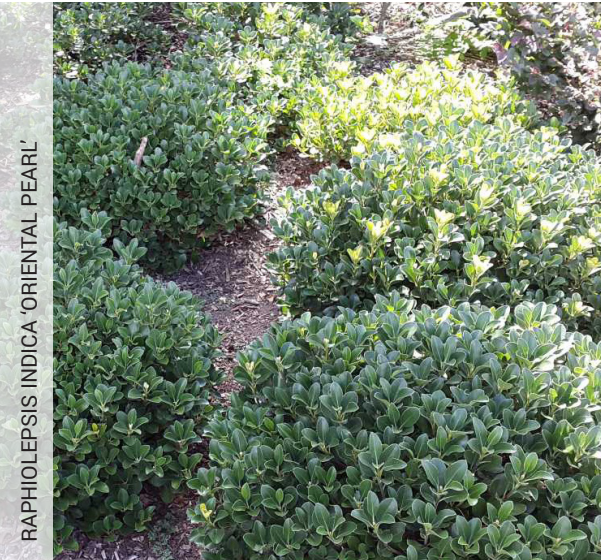
BOTANICAL NAME	COMMON NAME	INDICATIVE HEIGHT	INDICATIVE SPREAD	POT SIZE	DENSITY/m²	QUANTITY
Dietes grandiflora	Wild iris	1.2m	1.2m	200mm	4	549
Lirope 'Amethyst'	Liriope	0.4m	0.4m	200mm	8	1098
Raphiolepis indica 'Oriental Pearl'	Oriental Pearl	1m	1m	200mm	3	412
Trachelospermum 'tricolour'	Tricolour	0.5m	2m	200mm	3	412



STAGE 2

 PARKING BAY EDGE - AREA = 549m2

BOTANICAL NAME	COMMON NAME	INDICATIVE HEIGHT	INDICATIVE SPREAD	POT SIZE	DENSITY/m²	QUANTITY
Dietes grandiflora	Wild iris	1.2m	1.2m	200mm	4	549
Lirope 'Amethyst'	Liriope	0.4m	0.4m	200mm	8	1098
Raphiolepis indica 'Oriental Pearl'	Oriental Pearl	1m	1m	200mm	3	412
Trachelospermum 'tricolour'	Tricolour	0.5m	2m	200mm	3	412



NOTE:
PLANTING QUANTITIES FOR STAGES 2 ARE TOTAL NUMBER OF OVERALL PLANTS (INCLUDING STAGE 1 PLANTS)

STAGE 1

SHADE TOLERANT SOUTHERN ARRIVAL - AREA = 129m2

BOTANICAL NAME	COMMON NAME	INDICATIVE HEIGHT	INDICATIVE SPREAD	PREFERRED POT SIZE	DENSITY/m²	QUANTITY
Acanthus mollis	Oyster Plant/Bear's Breeches	2m	0.3m	200mm	3	56
Aspidista elatior	Cast Iron Plant	1.2m	1.5m	200mm	6	111
Asplenium nidus	Birds Nest Fern	1m	1.5m	200mm	3	56
Blechnum 'silver lady'	Silver Lady Fern	1.2m	1m	200mm	3	56
Cissus antarctica	Kangaroo Vine	4m	6m	200mm	3	56
Clivia miniata 'yellow'	Yellow Kafir Lily	0.4m	0.5m	200mm	6	111
Philodendron xanadu	Xanadu	0.8m	1m	200mm	4	74



STAGE 2

SHADE TOLERANT SOUTHERN ARRIVAL - AREA = 129m2

BOTANICAL NAME	COMMON NAME	INDICATIVE HEIGHT	INDICATIVE SPREAD	PREFERRED POT SIZE	DENSITY/m²	QUANTITY
Acanthus mollis	Oyster Plant/Bear's Breeches	2m	0.3m	200mm	3	56
Aspidista elatior	Cast Iron Plant	1.2m	1.5m	200mm	6	111
Asplenium nidus	Birds Nest Fern	1m	1.5m	200mm	3	56
Blechnum 'silver lady'	Silver Lady Fern	1.2m	1m	200mm	3	56
Cissus antarctica	Kangaroo Vine	4m	6m	200mm	3	56
Clivia miniata 'yellow'	Yellow Kafir Lily	0.4m	0.5m	200mm	6	111
Philodendron xanadu	Xanadu	0.8m	1m	200mm	4	74

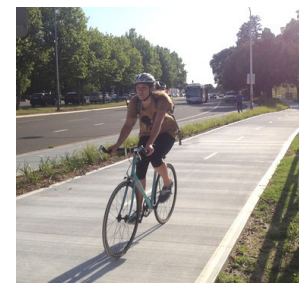


NOTE:
PLANTING QUANTITIES FOR STAGES 2 ARE TOTAL NUMBER OF OVERALL PLANTS (INCLUDING STAGE 1 PLANTS)

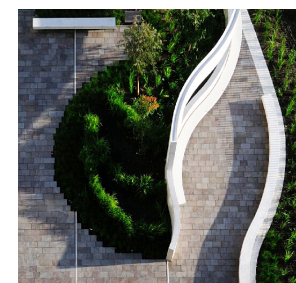


LANDSCAPE CONCEPT - FOREST WAY SOUTH

- Feature stone walling with native planting and feature lighting provides a southern entry feature
- Shareway along Forest Way improves the local active transport offer and promotes healthy and sustainable transport connections to the wider precinct
- Groupings of native Eucalypt trees along Forest Way reinforce the local character and environmental context
- Low level, shade tolerant planting (including ferns under the vehicle access ramp) reference the local endemic plant communities



SHAREWAY



FEATURE ENTRY STATEMENT



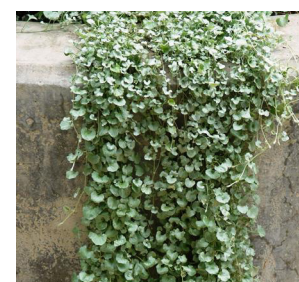
PAVING THRESHOLDS



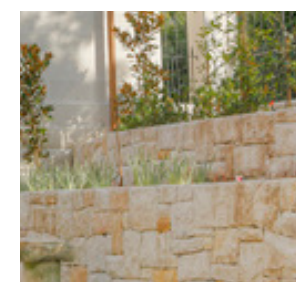
SHADE TOLERANT PLANTING

LANDSCAPE CONCEPT - NORTHERN PLAZA

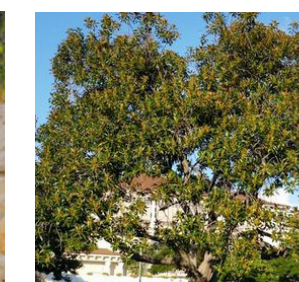
- Open plaza space with high quality, geometric paving design provides a social gathering place
- Large fig tree in a stepped landscape terrace provides a key entry feature
- Seating/rest bays along Forest Way supports fine grain pedestrian interactions with opportunities for pause and reflection



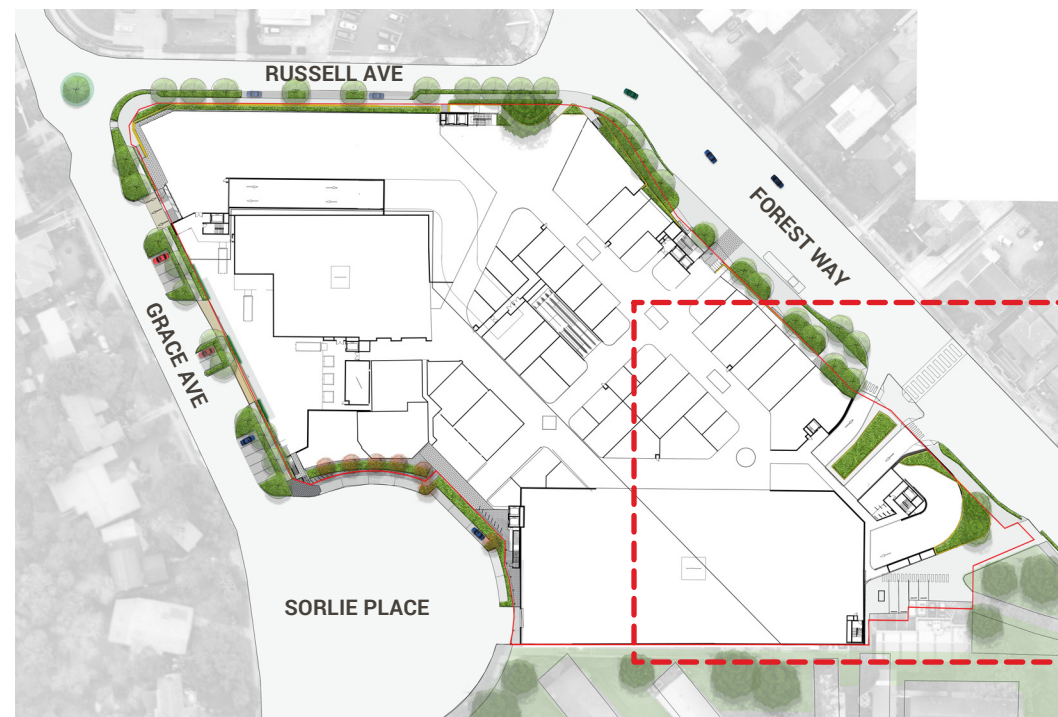
CASCADING PLANTING



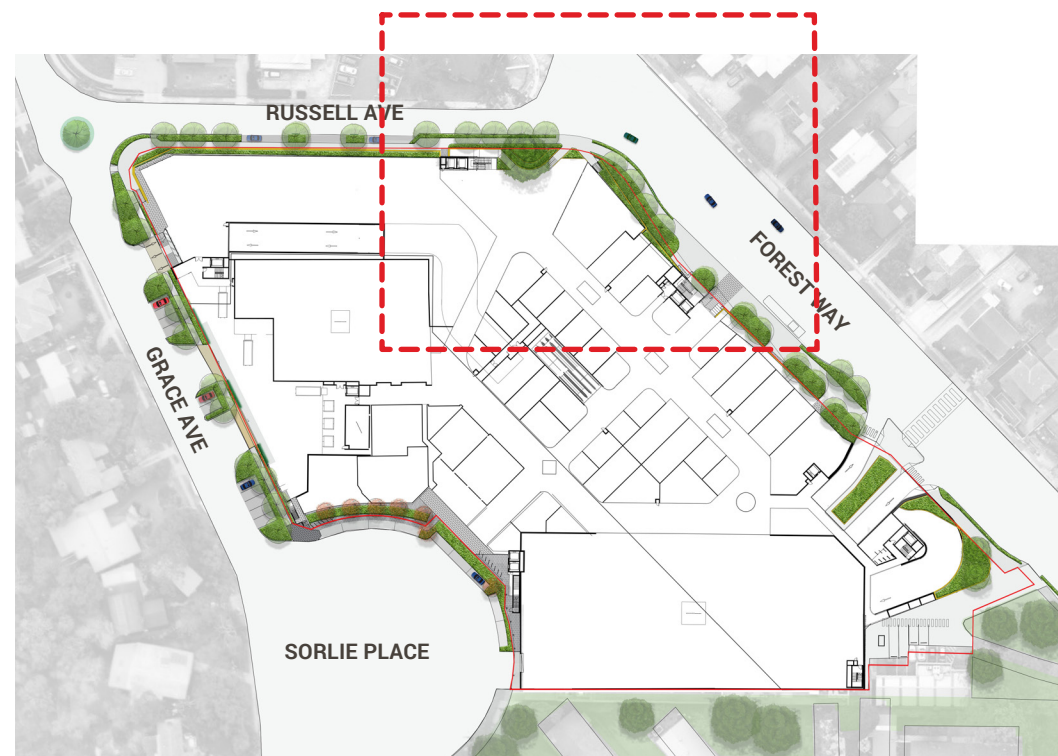
FEATURE WALLS



FEATURE FIG TREE

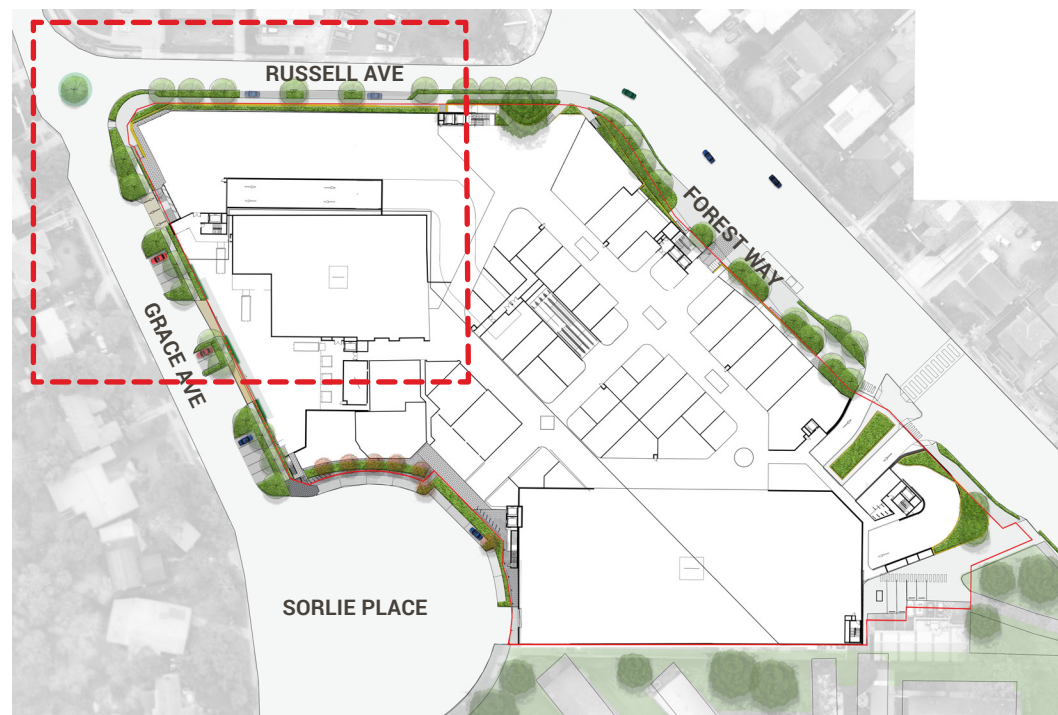


KEY PLAN



KEY PLAN





KEY PLAN

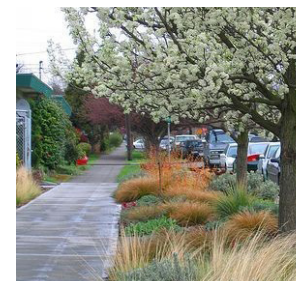


LANDSCAPE CONCEPT - RUSSELL/GRACE AVENUE

- Feature sandstone walls at the corner of Russell Avenue and Grace Avenue provide a striking natural look to compliment and soften the building edge
- Green 'Breathing Walls' along Grace Avenue provide acoustic buffering for adjacent residences
- 2m wide landscape setback along Russell Avenue with street tree planting and nature strip will improve the pedestrian experience
- Pedestrian priority paving treatment along Russell Avenue improves pedestrian safety



PEDESTRIAN PRIORITY PAVING



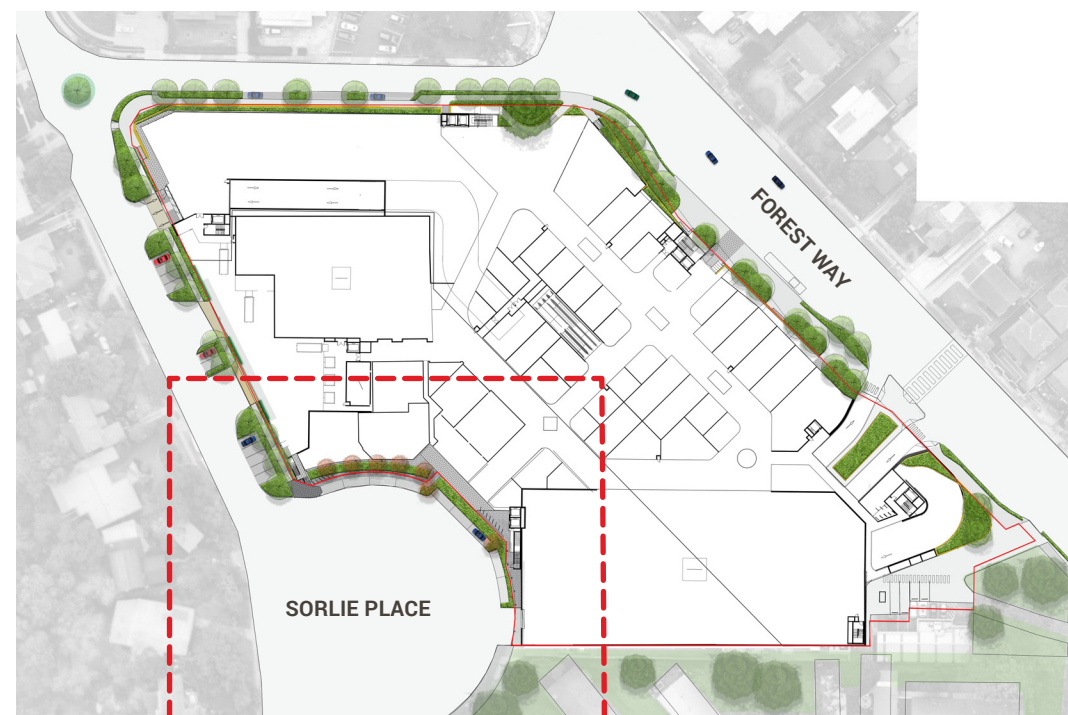
NATURE STRIP PLANTING



BREATHING/GREEN WALL FACADE



SANDSTONE WALLS AND FEATURE PLANTING

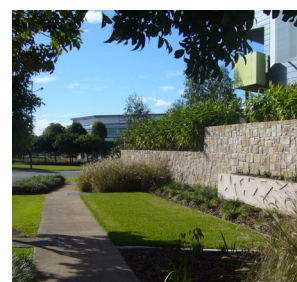


KEY PLAN

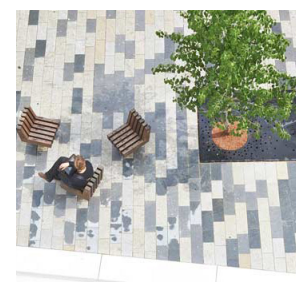


LANDSCAPE CONCEPT - SORLIE PLACE

- Corner stairs provide exterior access to the sky garden
- Nature strip with deciduous tree plantings maximising solar gain and offering seasonal interest
- Proposed future planted walkway provides a sheltered walkway connection to and from the adjacent school and wider precinct



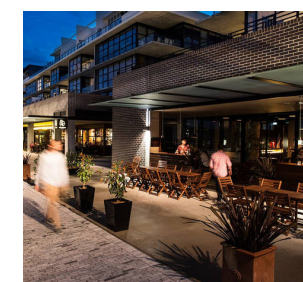
SANDSTONE RETAINING WALLS



FEATURE PAVING



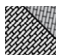

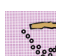

DECIDUOUS TREE PLANTING






FEATURE PAVING

LANDSCAPE PLAN - LEVEL 1

LEGEND - FINISHES

- Property boundary
-  Paving type 1- 20mm Basalt paver
-  Paving type 2 - Concrete path
-  Paving type 3 - Rubber softfall
-  Paving type 4 - Synthetic turf

LEGEND - SOFTWORKS

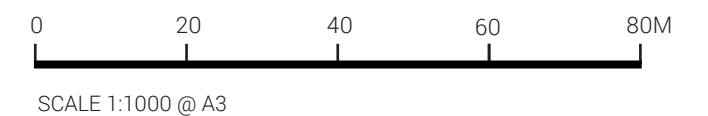
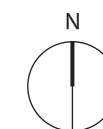
-  New Tree - Evergreen
-  New Tree - Deciduous
-  Shrub and grasses planting

LEGEND - ACCESS/CIRCULATION

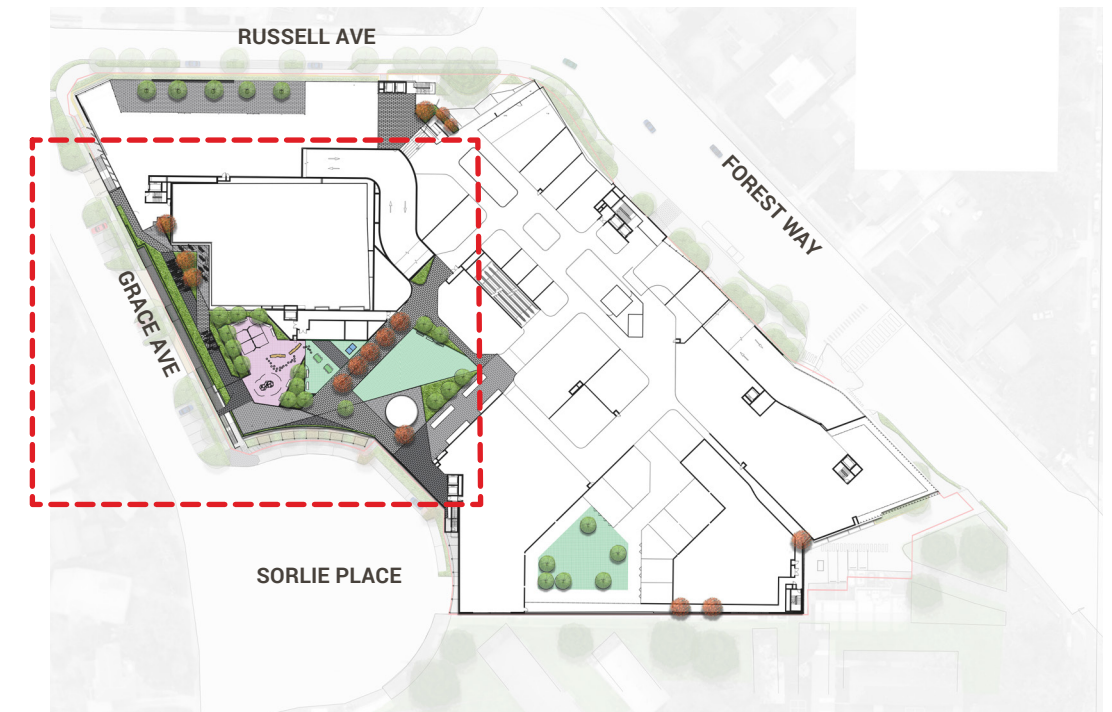
- >--> Pedestrian circulation/access

LEGEND - LEVELS

- +147.68 Existing level
- + RL 149.92 Proposed level



DETAIL PLAN 5 -SKY GARDEN



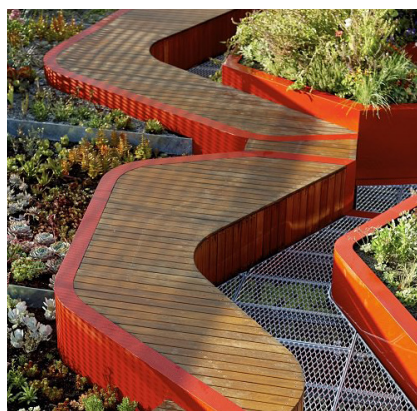
KEY PLAN

LANDSCAPE CONCEPTS

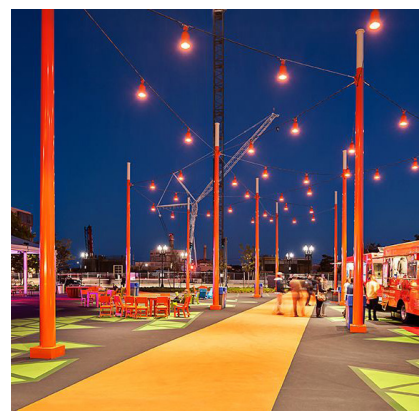
- A variety of social spaces offering programmable events for young families and older children
- Nodes of social activity with seating positioned to maximise views
- Children's garden with 'nature play' elements linked to the local ecological communities
- Quiet and contemplative space to the north offering intimate catenary lighting, feature planting and covered seating spaces
- Large green 'breathing wall' and steel trellis system screens the edge of the building
- Raised planters provide soil depth for a mature tree canopy



COVERED WALKWAYS



CUSTOM SEATING



CATENARY LIGHTING



NATURE PLAY ELEMENTS

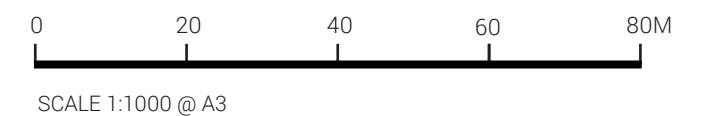
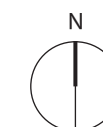
PLANTING SCHEME - LEVEL 1



LEGEND - PLANTING

- PLANTING MIX 6 - Rooftop edge planting
- PLANTING MIX 7 - Tropical playground planting
- PLANTING MIX 8 - Lush textured planting
- CASCADING PLANTING EDGE

- New Tree - Evergreen
- New Tree - Deciduous



PLANTING SCHEDULE LEVEL 1 - TREES

BOTANICAL NAME	COMMON NAME	INDICATIVE HEIGHT	INDICATIVE SPREAD	POT SIZE	DENSITY/m²	QUANTITY
TREES						
Brachychiton x populneus 'Jerilderee Red'	Jerilderee Red	8m	7m	25L	As shown	12
Dypsis Leptocheilos	Redneck/Teddy Bear Palm	12m	5m	25L	As shown	3
Lagerstroemia indica x faurieri 'Natchez'	Crepe Myrtle	6m	4m	25L	As shown	14
Magnolia grandiflora 'Little Gem'	Little Gem	5m	2.5m	25L	As shown	5
Xanthorrhoea glauca	Grass Tree	1.5m	2m	10L	As shown	6



PLANTING SCHEDULE LEVEL 1 - MIX 6

ROOFTOP EDGE

BOTANICAL NAME	COMMON NAME	INDICATIVE HEIGHT	INDICATIVE SPREAD	POT SIZE	DENSITY/m²	QUANTITY
Dianella 'Little Jess'	Little Jess	0.4m	0.4m	200mm	8	294
Lomandra longifolia 'Nyalla'	Mat Rush	0.7-0.8m	0.8-1m	200mm	6	220
Pyrostegia venusta	Golden Shower	5m	1m	200mm	As shown	150
Trachelospermum jasminoides	Star Jasmine	6m	4m	200mm	4	147



PLANTING SCHEDULE LEVEL 1 - MIX 7

TROPICAL PLAYGROUND

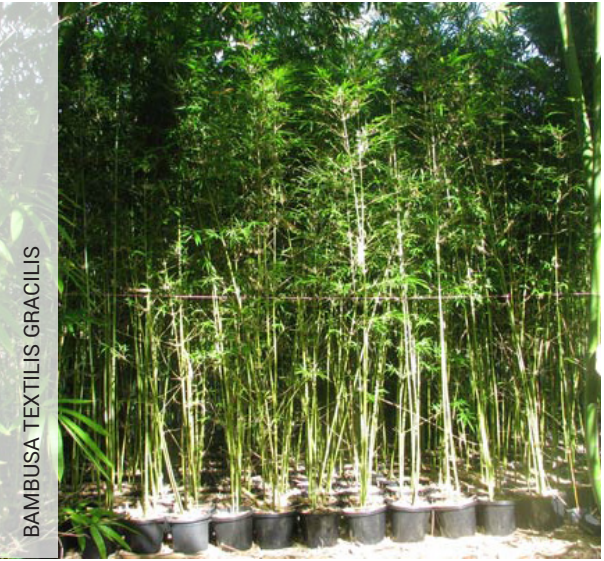
BOTANICAL NAME	COMMON NAME	INDICATIVE HEIGHT	INDICATIVE SPREAD	POT SIZE	DENSITY/m²	QUANTITY
Beschorneria yuccoides	Mexican Lily	1-2m	1m	200mm	3	107
Carpobrotus glaucescens	Pigface	0.2m	1m	200mm	5	179
Cordyline fruticosa 'Kiwi'	Kiwi Pride	1-2m	0.5m	200mm	3	107
Dianella tasmanica 'Tasred'	Native Flax	0.45m	0.4-0.5m	200mm	6	214
Liriope muscari 'Isabella'	Liriope	0.4m	0.5m	200mm	8	286



PLANTING SCHEDULE LEVEL 1 - MIX 8

LUSH TEXTURED PLANTING

BOTANICAL NAME	COMMON NAME	INDICATIVE HEIGHT	INDICATIVE SPREAD	POT SIZE	DENSITY/m²	QUANTITY
Bambusa textilis Gracilis	Slender Weaver's Bamboo	6-7m	1m	200mm	1	29
Lomandra longifolia 'Nyalla'	Mat Rush	0.7m-0.8m	0.8m-1m	200mm	5	146
Myoporum parvifolium 'Yareena'	Yareena	0.1m	1m	200mm	5	146
Philodendron Xanadu	Xanadu	0.6-0.8m	0.6-0.8m	200mm	4	116
Strelitzia juncea	Birds of Paradise	1-2m	1-2m	200mm	5	146



GREEN WALL APPROPRIATE SPECIES PALETTE (SUN/SHADE)

GREEN WALLS PLANT SPECIES - SUN

Botanical name	pot size
Acalypha hispida	75mm
Aeonium arboreum	75mm
Allocasuarina nana	75mm
Alyogone huegelii	75mm
Austromyrtus 'Copper Tops'	75mm
Brunfelsia latifolia Compacta	75mm
Callistemon citrinus 'Endeavour'	75mm
Callistemon linearifolius	75mm
Calocephalus lacteus	75mm
Carissa grandiflora Nana	75mm
Cestrum nocturnum	75mm
Cuphea hyssopifolia Mauve	75mm
Cuphea hyssopifolia White	75mm
Drosanthemum floribundum	75mm
Drosanthemum hispidum	75mm
Euphorbia millii cv Red	75mm
Euphorbia millii cv Yellow Green	75mm
Euryops pectinatus Little Sunray	75mm
Eutaxia cuneata	75mm
Evolvulus pilosus Saphhire Blue	75mm
Geranium solanderi	75mm
Goodenia ovata	75mm
Graptophyllum excelsum	75mm
Graptophyllum illicifolium	75mm
Hibiscus rosa- sinensis cv. Yellow	75mm
Hibiscus rosa- sinensis 'Swan Lake'	75mm
Hovea longifolia	75mm
Hylocereus undatus	75mm
Indigofera australis	75mm
Iresine herbstii	75mm
Jacksonia scoparia	75mm
Jatropha podagrica	75mm
Justicia brandegeana	75mm
Justicia carnea	75mm
Kalanchoe uniflora	75mm
Lampranthus aurantiacus	75mm
Myoporum floribundum	75mm
Phyllanthus myrtifolius	75mm

GREEN WALLS PLANT SPECIES - SHADE

Botanical name	pot slze
Abutilon 'Lightning'	75mm
Acacia suaveolens	75mm
Adenium obesum	75mm
Adiantum raddianum	75mm
Aeschynanthes species	75mm
Alcalypha Firestorm	75mm
Allocasuarina nana	75mm
Aptena cordifolia	75mm
Baekea imbricata	75mm
Banksia integrifolia prostrata	75mm
Barleria cristata	75mm
Bauera rubioides 'Candy Stripe'	75mm
Begonia Dragon Wing	75mm
Billbergia species	75mm
Blechnum nudum	75mm
Bossiaea prostrata	75mm
Breynia nivea	75mm
Breynia oblongifolia	75mm
Brunnera	75mm
Buddleia Black Knight	75mm
Calathea Makoyana	75mm
Ceropegia woodii	75mm
Chlorophytum comosum Green	75mm
Chlorophytum comosum variegated	75mm
Columnea species	75mm
Coprosma repens 'Karo Red'	75mm
Darwinia citriodora prostrata	75mm
Dendrobium speciosum	75mm
Dichondra argentea Silverfalls	75mm
Dichorisandra thyrsiflora	75mm
Dimorphotheca Orange	75mm
Fuschia species	75mm
Gastrolobium celsianum	75mm
Gibasis geniculata	75mm
Heliotropium arborescens	75mm
Hemizygia	75mm
Hosta Bright Edge	75mm
Hydrocotyle geraniifolia	75mm

Botanical name	pot slze
Hypoestes phyllostachya	75mm
Impatiens repens	75mm
lochroma cyanea	75mm
Isotoma fluviatilis	75mm
Kunzea baxteri Dwarf	75mm
Lamium maculatum	75mm
Leptospermum Cardwell	75mm
Mazus pumilio	75mm
Melaleuca fulgens Red	75mm
Melaleuca squarrosa 'Coastal Carpet'	75mm
Microsorium scolopendrium	75mm
Microstrobos fitzgeraldii	75mm
Neomarica gracillis	75mm
Nephrolepis pendula	75mm
Patersonia occidentalis Purple	75mm
Patersonia occidentalis White	75mm
Pelargonium australe	75mm
Pelargonium rodneyanum	75mm
Peperomia obtusifolia Large Leaf	75mm
Pereskia grandiflora var. violacea	75mm
Phebalium squamulosum 'Stary Clusters'	75mm
Philodendron species	75mm
Philodendron 'Xanadu'	75mm
Pilea libanensis	75mm
Plectrathus argentatus	75mm
Podocarpus lawrencei (prostrate form)	75mm
Prostanthera aspalatoides Orange	75mm
Prostanthera ovalifolia 'Purpurea'	75mm
Pteris ensiformis	75mm
Punica granatum Dwarf	75mm
Ruellia brittoniana Pink	75mm

Botanical name	pot slze
Rulinga hermaniifolia	75mm
Salvia greggii 'Crimson and Black'	75mm
Salvia greggii 'Sierra Pink'	75mm
Salvia microphylla 'Huntingtons Red'	75mm
Sansevieria trifasciata 'Hahnii'	75mm
Saxifraga stolonifera	75mm
Scaevola aemula 'Purple Fanfare'	75mm
Solanum rantonnetii 'Royal Robe'	75mm
Spiraea cantoniensis dwarf	75mm
Streptocarpus caulescens	75mm
Streptosolen jamesonii 'Ginger Megs'	75mm
Strobilanthes gossypinus	75mm
Thelionema caespitosum Blue	75mm
Thomasia purpurea	75mm
Tillandsia Cyanea	75mm
Zebrina pendula	75mm
Zieria littoralis	75mm

NOTE: This is an exhaustive list. Further consultation with Green Wall consultant and nursery will determine each indiviual wall appropriate species based on microclimatic condiditons, eventual design and aspect.

LANDSCAPE HARD MATERIALS



NATURAL
PLAYFUL



STONE
HONEST

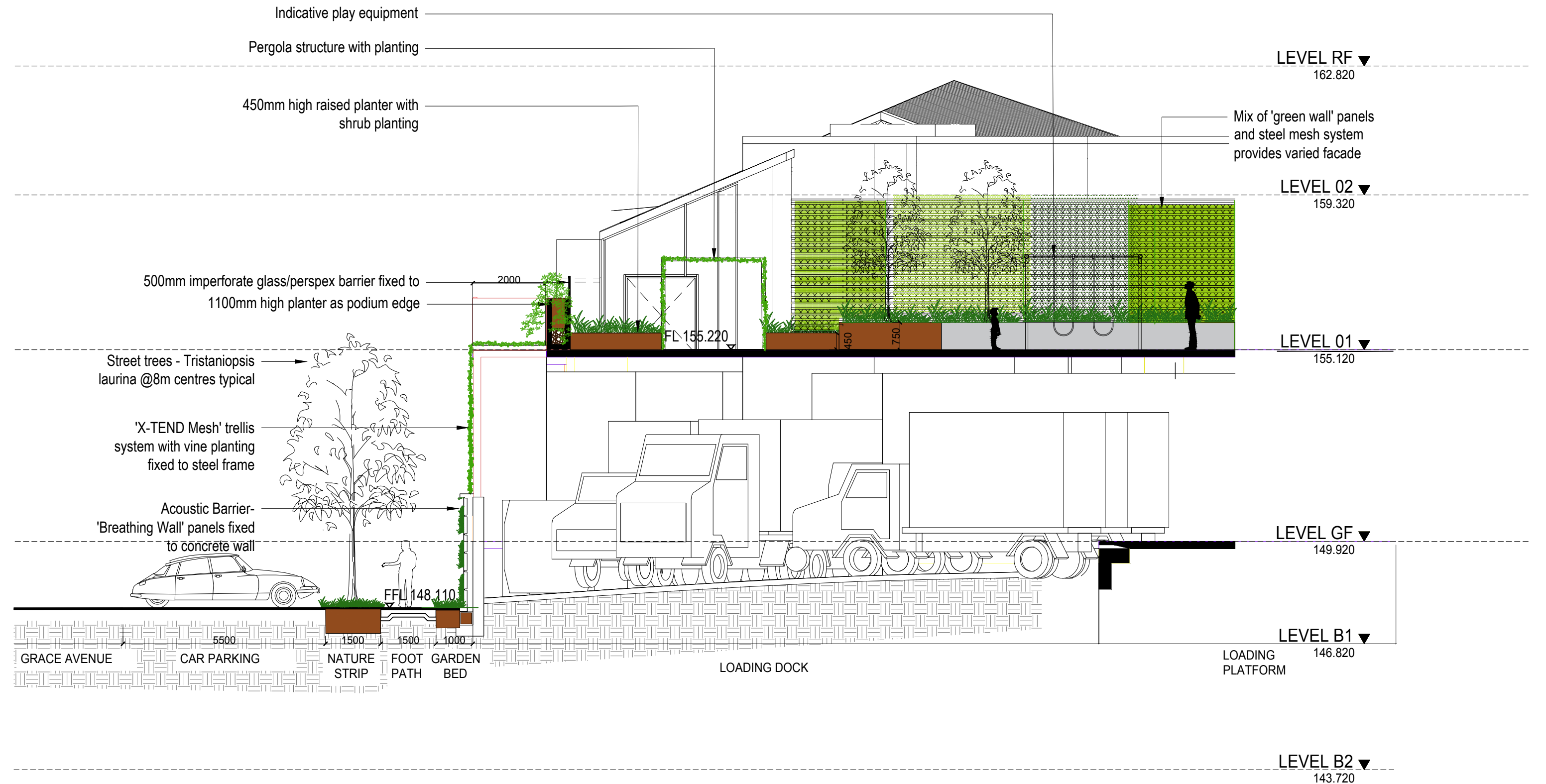


TIMBER
LOCAL

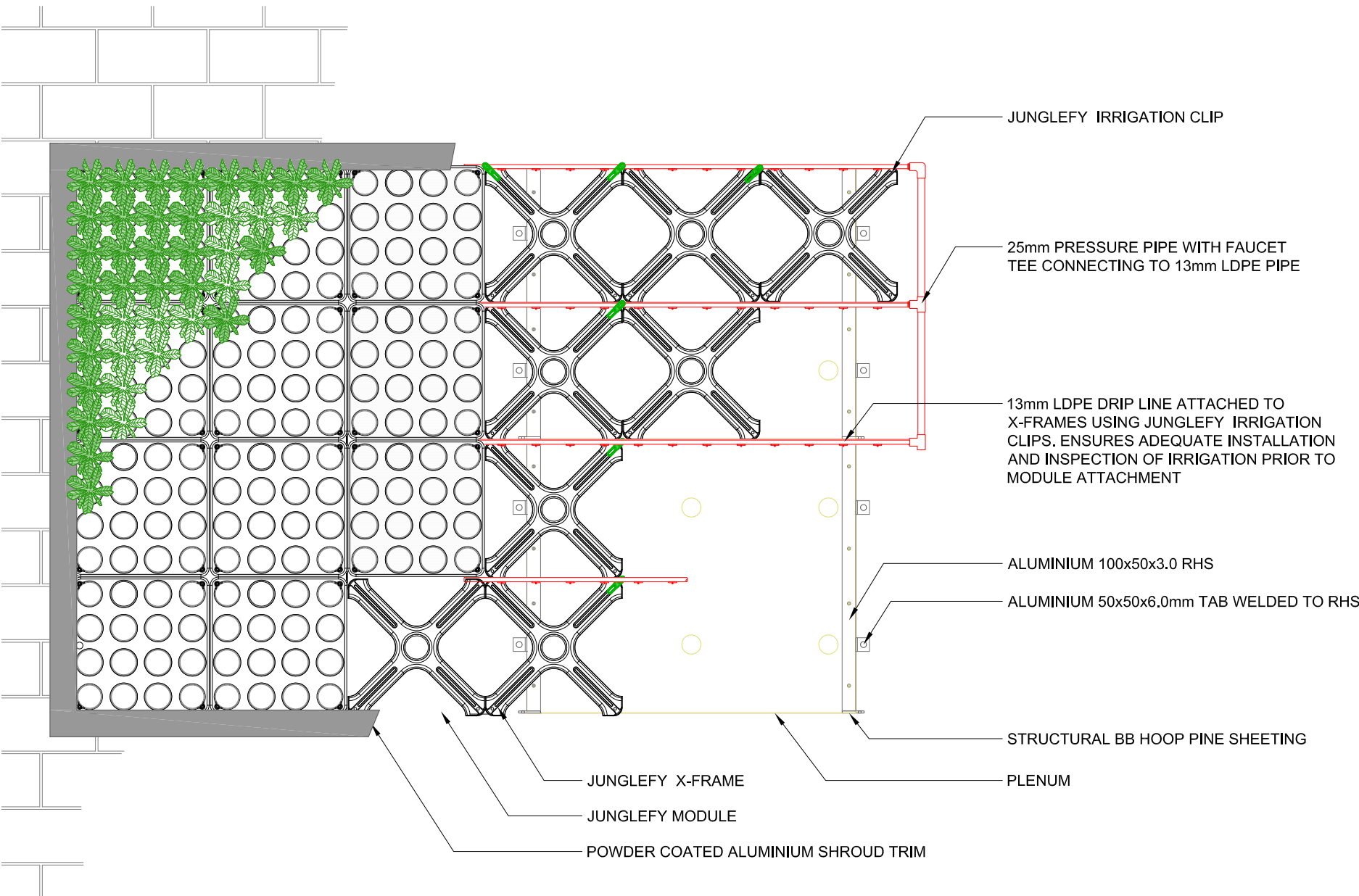


STEEL
INTEGRITY

GRACE AVENUE ACOUSTIC/GREEN WALL



SECTION AA @1:100 @A3

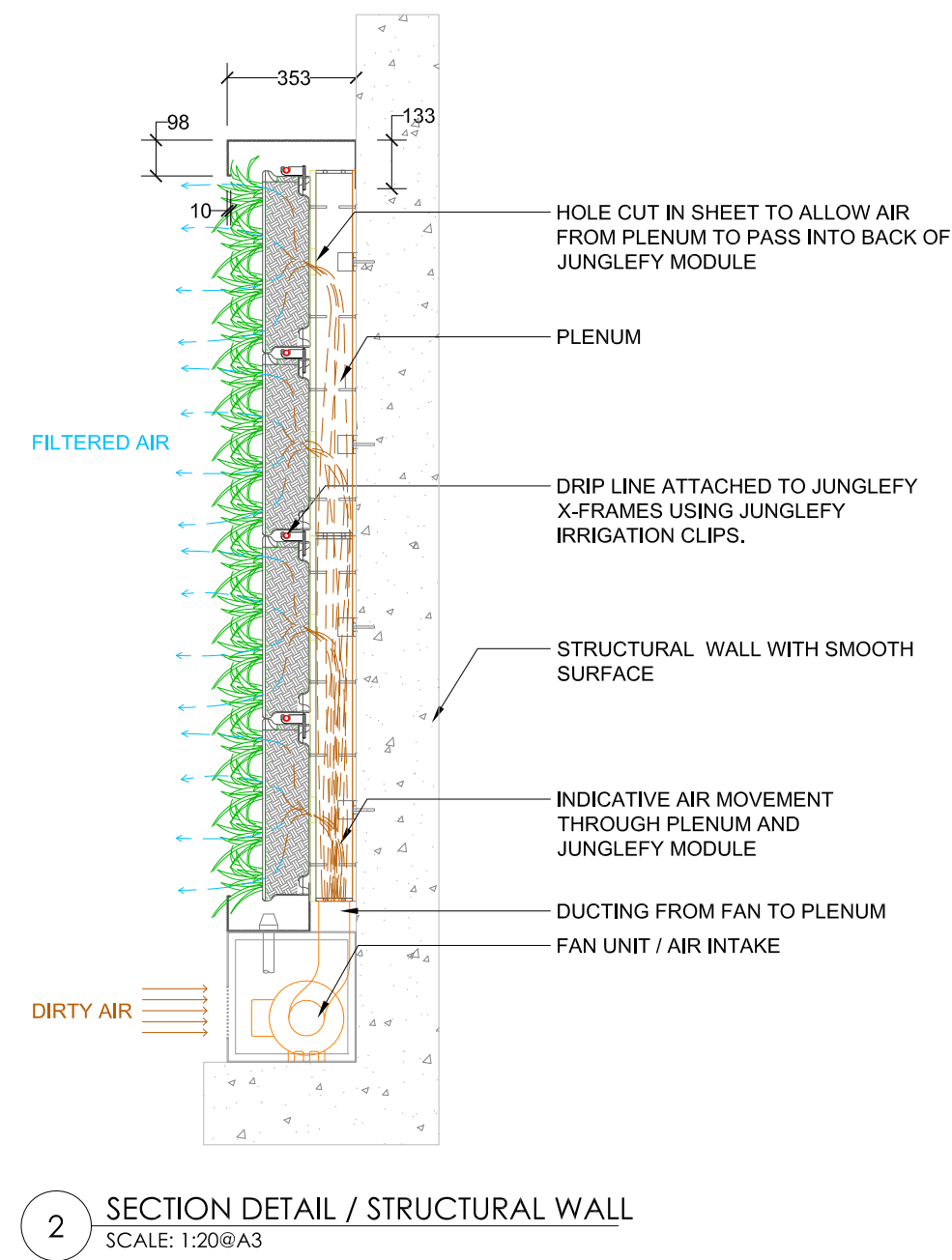
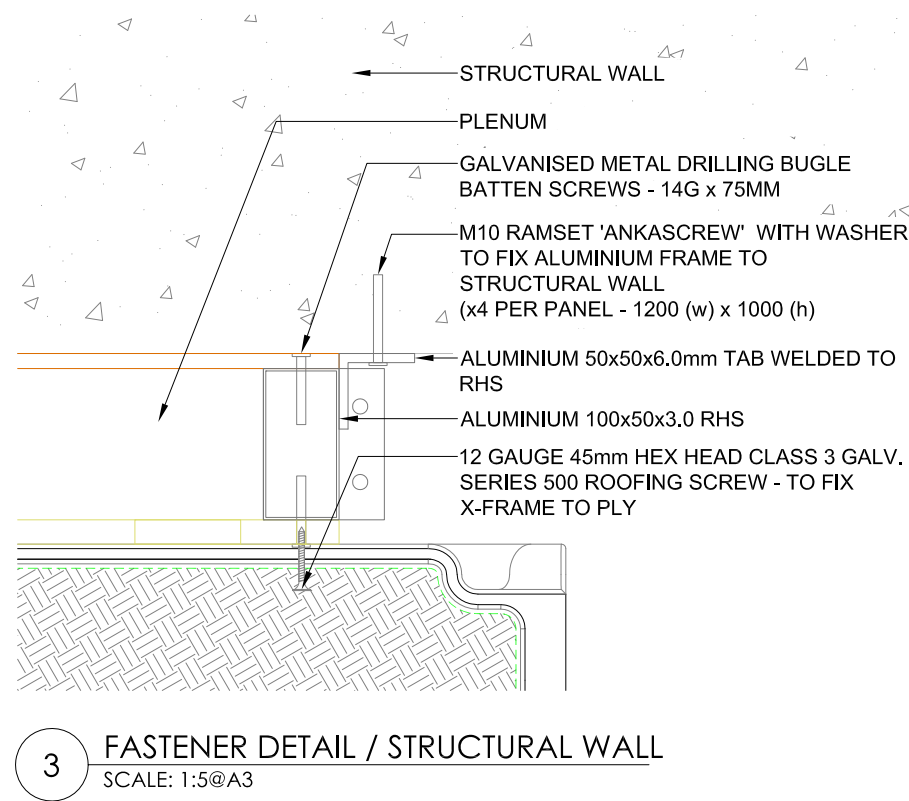
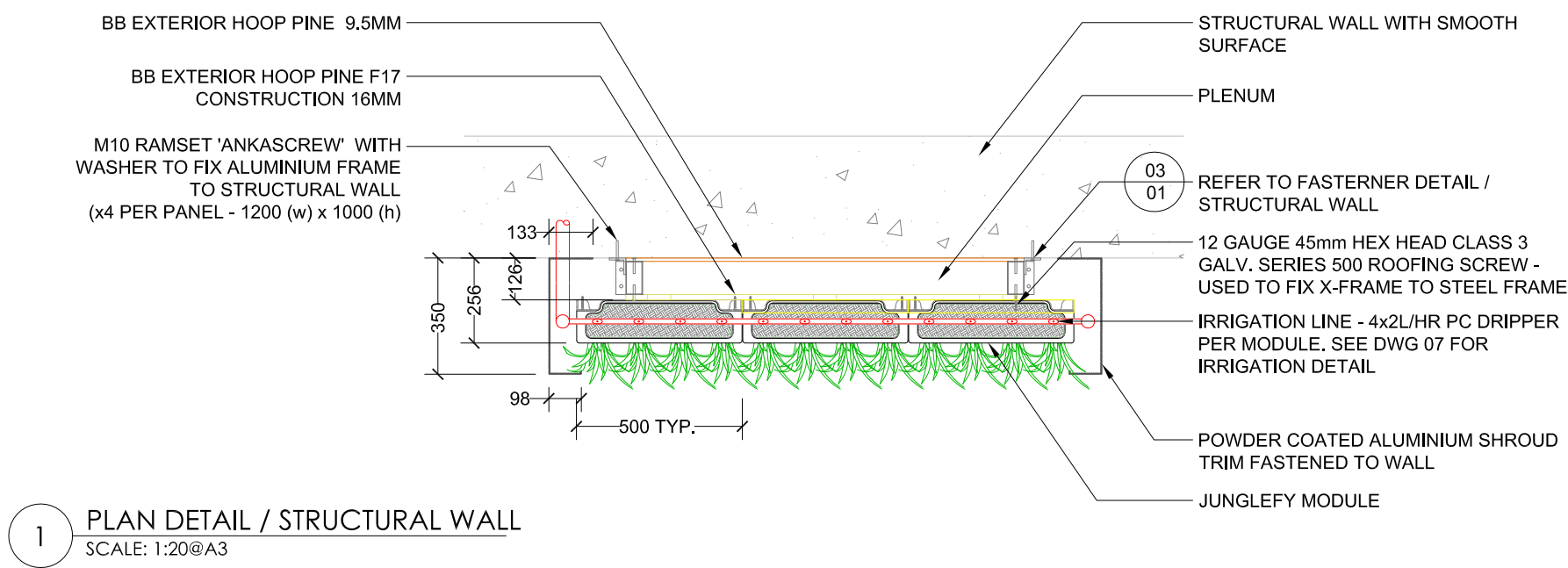


BREATHING WALL TECHNOLOGY

The 'Junglefy Breathing Wall' is an active modular system that combines nature and technology to provide a safer, more comfortable and productive living environment. has many environmental and aesthetic benefits and will ultimately contribute to an environment that is visually pleasing, sustainable and healthy. Some of the research proven benefits include:

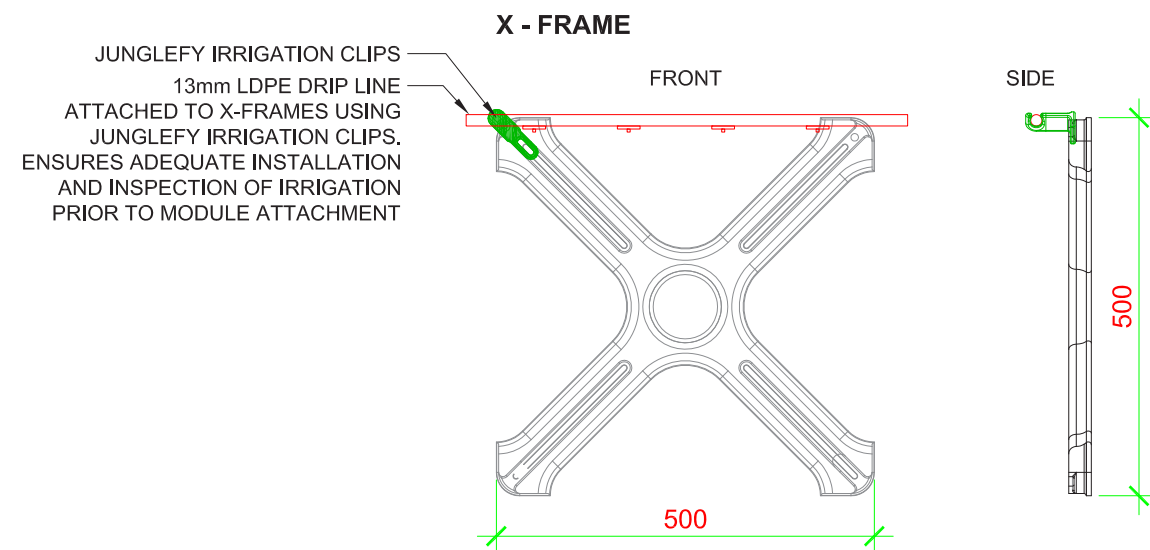
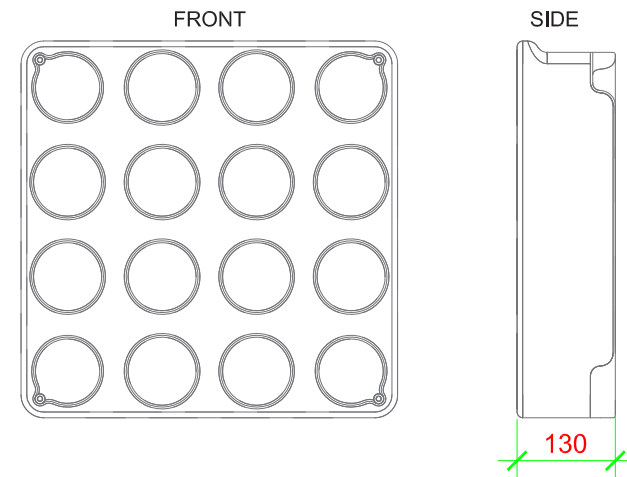
- Noise reduction** – the breathing wall absorbs noise and will significantly reduce the impact of surrounding traffic noise by up to 41%.
- Energy efficiency** – the Junglefy breathing wall humidifies the air, hence reducing the need for air conditioning.
- Biophilic** – it is an effective, space saving means of introducing nature into our internal built environments, creating healthier and happier building occupants.
- Carbon dioxide reduction** – the walls reduces CO2 and will absorb pollution from surrounding cars and break down volatile organic compounds such as toxic gases released into harmless substances.

1 BREATHING WALL BUILD-UP
SCALE: 1:20

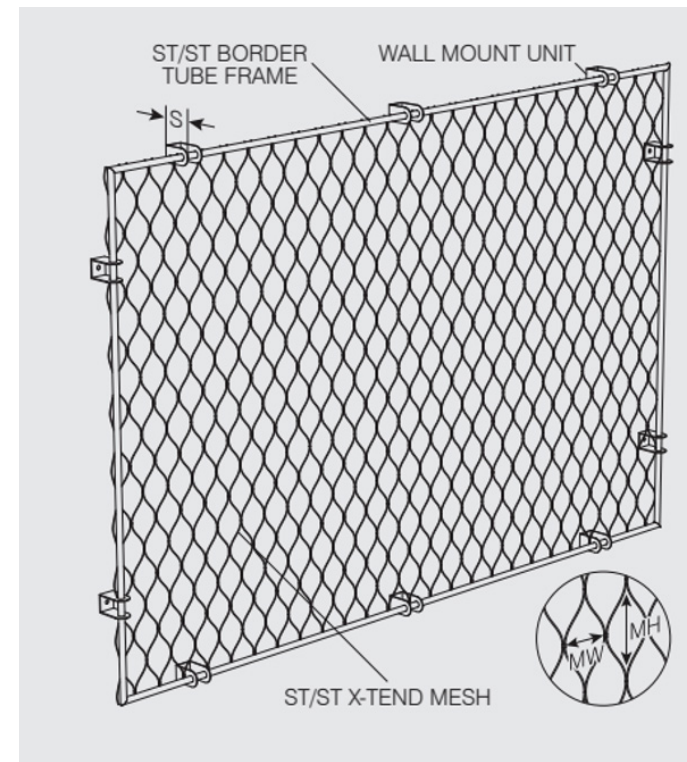


GREEN WALL AND TRELLIS INFORMATION

MODULE

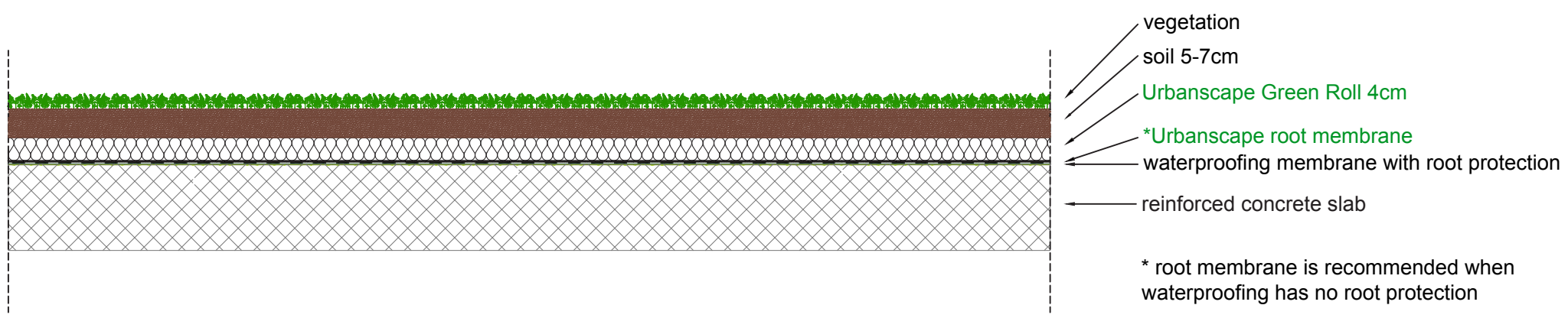


GREEN WALL MODULE

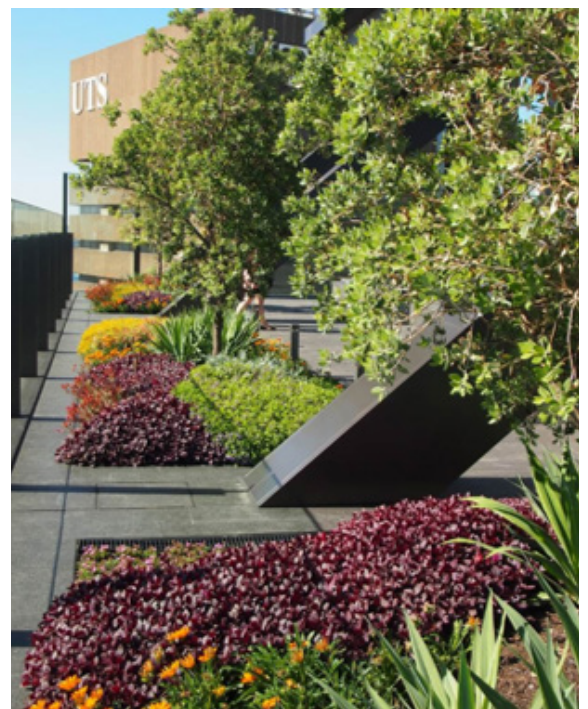


TRELLIS SYSTEM

Mesh trellis systems can span large voids and areas, providing continuous plant support across any structure. Stainless steel mesh is bordered by rigid stainless steel tube frames allowing for greater control over broad shapes.



GREEN ROOF DETAIL
SCALE: 1:10@A3



place
design
group.

Australia
China
South East Asia

Follow us on



placedesigngroup.com